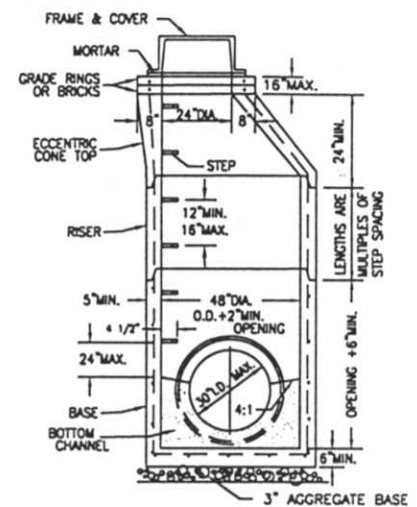
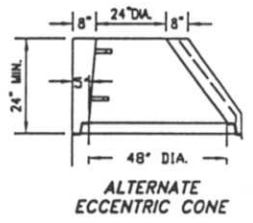
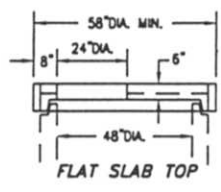
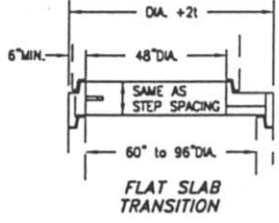
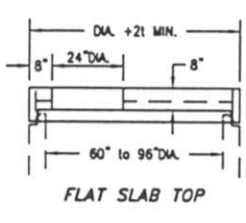


BASE I.D.	MIN. "I"	MAX. PIPE SIZE
60"	5"	36"
72"	6"	48"
84"	7"	54"
90"	7 1/2"	60"
96"	8"	60"



60" to 96" PRECAST BASE
SEE TABLE FOR MAXIMUM PIPE SIZES

48" PRECAST BASE
FOR 30" AND SMALLER PIPE



NOTES

GENERAL:
WITH NORMAL SOIL AND SITE CONDITIONS THIS STANDARD PRECAST MANHOLE MAY BE USED FOR ANY REQUIRED MANHOLE DEPTH

SECTIONS OF THE PRECAST MANHOLE SHALL BE ASSEMBLED WITH EITHER ALL TONGUE OR ALL GROOVE ENDS UP. LIFT HOLES MAY BE PROVIDED IN EACH SECTION FOR HANDLING.

TOP AND TRANSITION (OR REDUCER)
SECTIONS MAY BE EITHER ECCENTRIC CONE OR FLAT SLAB.

BASES FOR NUMBER 3 MANHOLES ARE SHOWN WITH MONOLITHIC FLOOR AND RISER. OPENINGS FOR INLET AND OUTLET PIPES SHALL BE PROVIDED, EITHER WHEN THE UNIT IS CAST OR LATER, TO MEET PROJECT REQUIREMENTS. BOTTOM CHANNELS MAY BE CONCRETE PRE-POURED AT PLANT OR BY FIELD CONSTRUCTION AS SHOWN ON ODOT MH-1 AND MH-2

OPENINGS IN RISER SECTIONS FOR 18" AND SMALLER INLET PIPES MAY BE PREFABRICATED OR CUT IN THE FIELD PROVIDED THE SIDES OF THE PIPE AT THE SPRINGLINE DO NOT PROJECT INTO THE MANHOLE

JOINT SEAL BETWEEN PRECAST MANHOLE SECTIONS SHALL BE EITHER BITUMINOUS PIPE JOINT FILLER PER ODOT SPEC. 706.10 OR RESILIENT AND FLEXIBLE GASKETS PER ODOT SPEC. 706.11.

MATERIALS FOR BASES AND OTHER PRECAST SECTIONS, INCLUDING REINFORCEMENT NOT SPECIFIED HEREON, SHALL COMPLY WITH THE REQUIREMENTS OF ODOT SPEC. 706.13

STEPS, FRAMES AND COVERS SHALL CONFORM WITH THE REQUIREMENTS SET FORTH ON ODOT DWG. MH-1.

REINFORCED PRECAST CONCRETE MANHOLES

