

**NOTES**

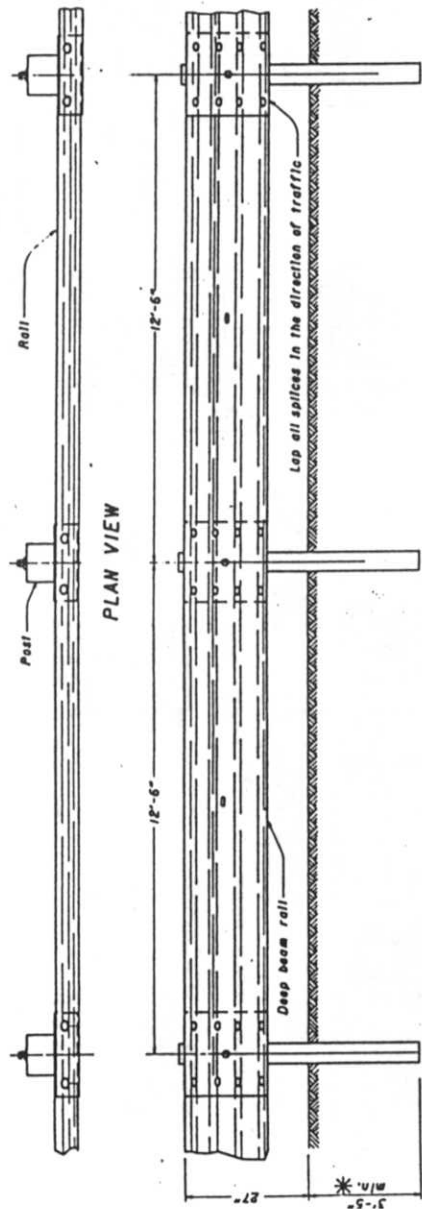
**POSTS** May be round (single rail only) or 6"x8" square-tressed pressure-treated wood or W6x9 galvanized steel. The same type post shall be used throughout the length of the post. Posts shall be round for the single rail or parallel by the Engineer. Round posts shall be 8" plus or minus 1" in diameter at the top end not more than 3" larger at the butt with a uniform taper. Post may be set in drilled holes or driven to grade. Wood post shall be fabricated with square ends. Post shall be pressure-treated as per 710.14. Bolt holes shall be bored and tops of posts trimmed, if required, after posts are set.

**WASHERS:** All washers shown are standard galvanized steel of the appropriate size.

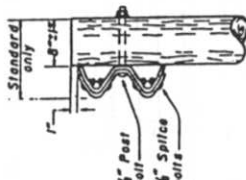
**WELDED BEAM** posts may be used. See note and dimensions on GR-2.1.

**FOR DETAILS** not shown see Std. Const. Dwg. GR-1.1 and GR-1.2.

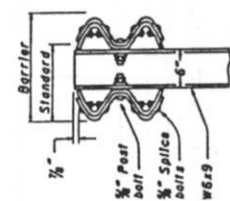
\* **FOR SPECIFIC POST** embedment depth requirements see Std. Const. Dwg. GR-1.2.



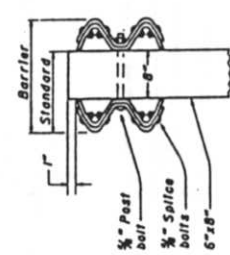
**ELEVATION**



**ROUND WOOD POST**



**STEEL POST**



**SQUARE WOOD POST**



BUREAU OF LOCATION AND DESIGN OHIO DEPARTMENT OF TRANSPORTATION	
DATE 5-6-91	
<b>GUARDRAIL TYPE 4</b>	
STANDARD CONSTRUCTION DRAWING <b>GR-2.3</b>	
APPROVED <i>R. V. [Signature]</i> ENGR., L.S.D.	